



Z169.720-4===

## Accessories

Z169.850



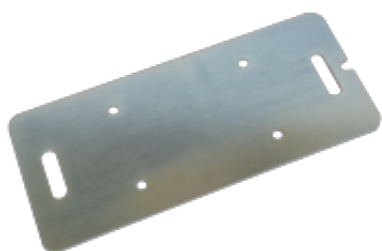
17,5 kg side ballast

T528.700



Ballasts fitting kit

Z169.851



17 kg back ballast

Z169.852



Fitting kit for ballast Z169.851

Z099.718===



Pole mounted flashing beacon

E506.750===



Key Pad on/off

Z323.710===



Rear wheel guard

ZG40.003.800



Adjustable connection

A199.706



Drop pin Ø40 mm

A161.700===



Pushing block